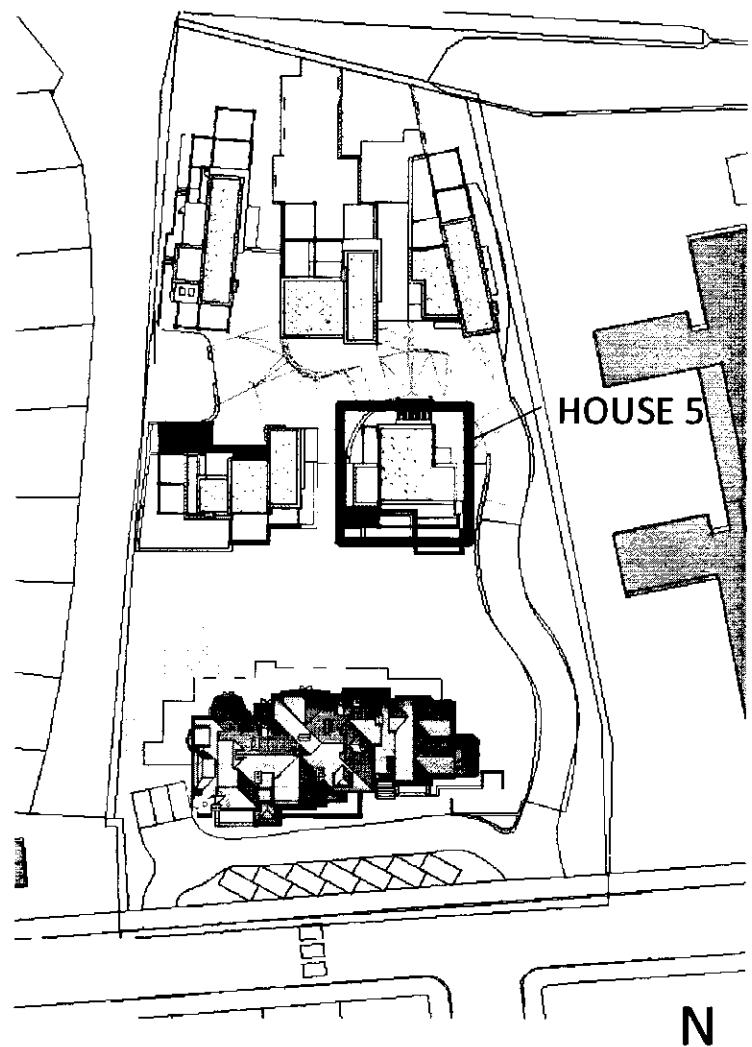
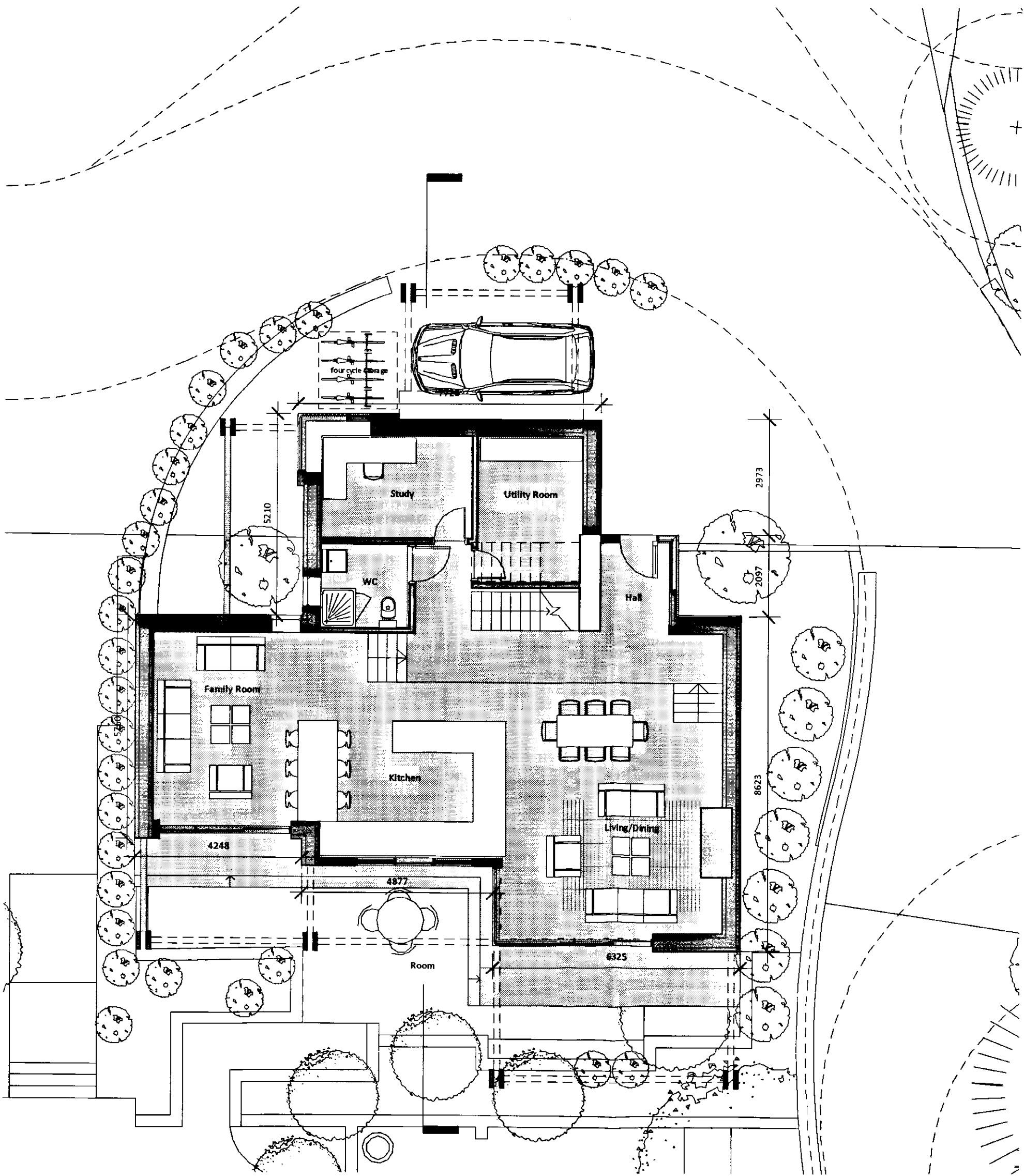


HOUSE 5 - SECTION  
1:100

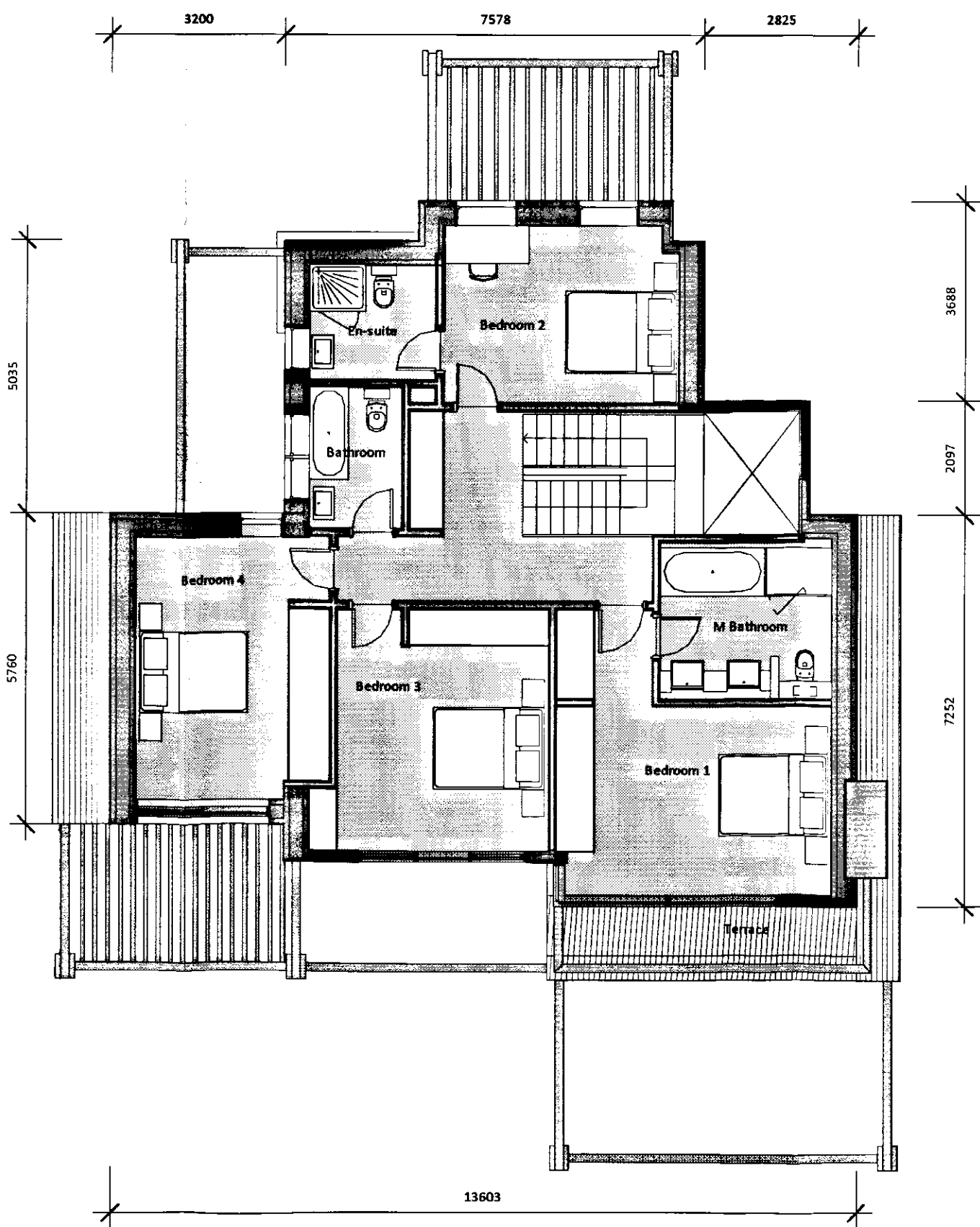


REF PLAN - HOUSE 5  
1:1000

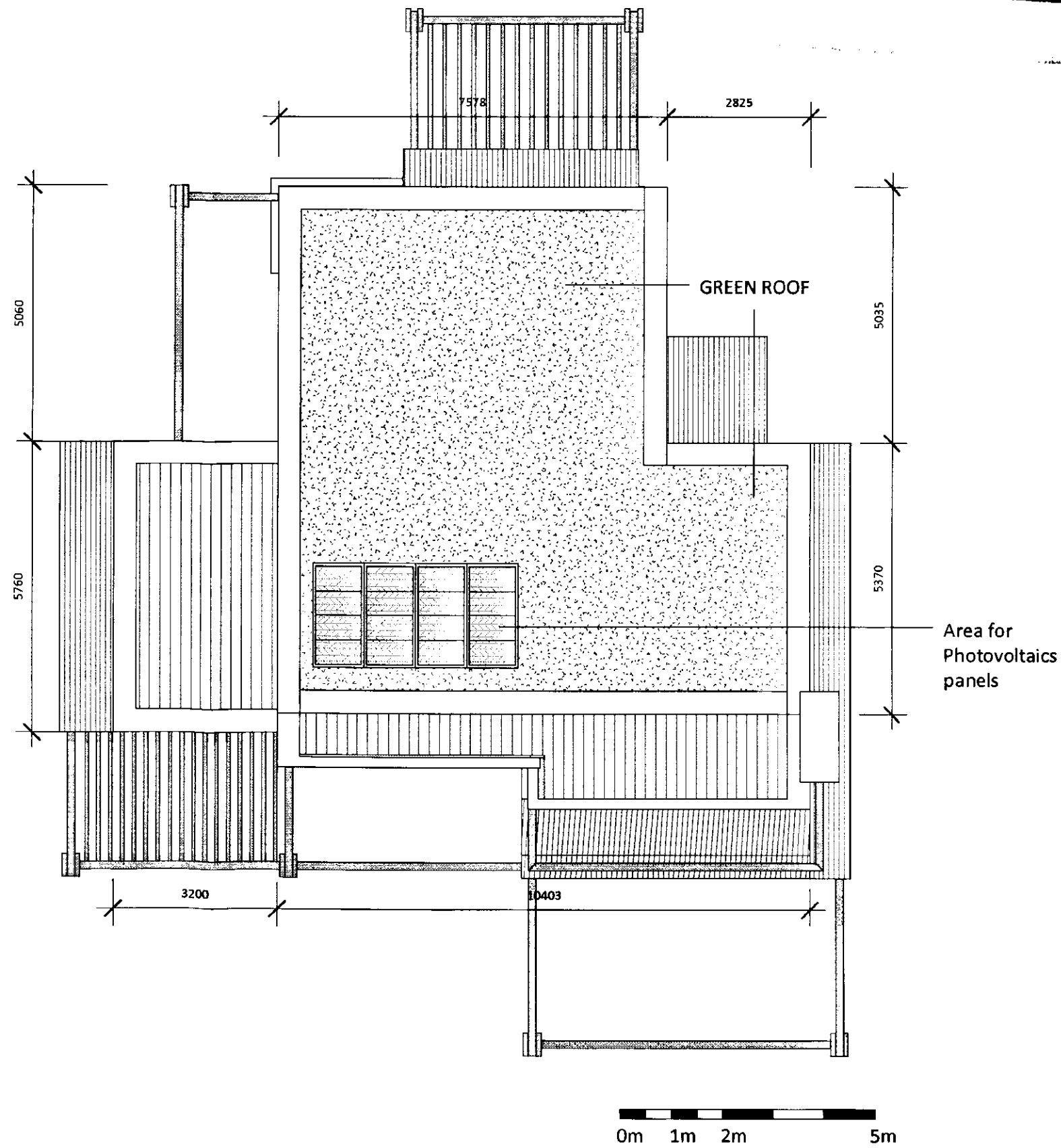
SOUTH... PLANNING  
**CASE FILE COPY**  
DATE RECEIVED: 08 APR 2011  
REGISTERED NUMBER: 10 AP 37



HOUSE 5 - GL  
1:100



HOUSE 5 - L1  
1:100



HOUSE 5 - RL  
1:100

General notes:

This drawing is copyright of KSR architects. This drawing must be read in conjunction with the design's risk assessment, specification and all other relevant documentation and drawings. KSR architects accept no liability for any expense, loss or damage of whatsoever nature and however arising from any variation made to this drawing or in the execution of the work to which it relates which has not been referred to them and their approval obtained. Do not scale from the drawing or the digital file, only figured dimensions are to be used. For Planning refer to linear scale. Check all dimensions on site.

Notes/Legends

Dwelling type (beds/persons)		Essential GIA (sq.m)	Living/ dining/ kitchen	Separate Kitchen/ diner?	Bed 1 (sq.m)	Bed 2 (sq.m)	Bed 3 (sq.m)	Bed 4 (sq.m)	Bathroom (sq.m)	Entry Level WC	Storage (sq.m)	Study (sq.m)	Open Space (sq.m)	
HOUSE 5 (2 storey)	4b8p	LHDG	127.0	31.0	yes	12.8	12.8	12.8	12.8	1	1	1.7	-	11.0
		KSR	238.1	77.6	yes	20.5	13.8	17.6	17.3	3	1	1	10.1	
		ALL COMPLIANT												

Stamp

Key Plan

PLANNING  
APPLICATION  
Dec 2010

Rev: Notes

KSR architects  
14 Greenland Street  
London  
NW1 0ND

T: +44 (0)20 7692 9000  
F: +44 (0)20 7692 9000  
www.ksr-architects.com

KSR  
architects

Project:  
123 GROVE PARK  
London

Title:  
PROPOSED HOUSE 5 - PLANS &  
SECTION

Date: Dec 2010

Drawn By: LRG

Checked: LRG

Project Ref:

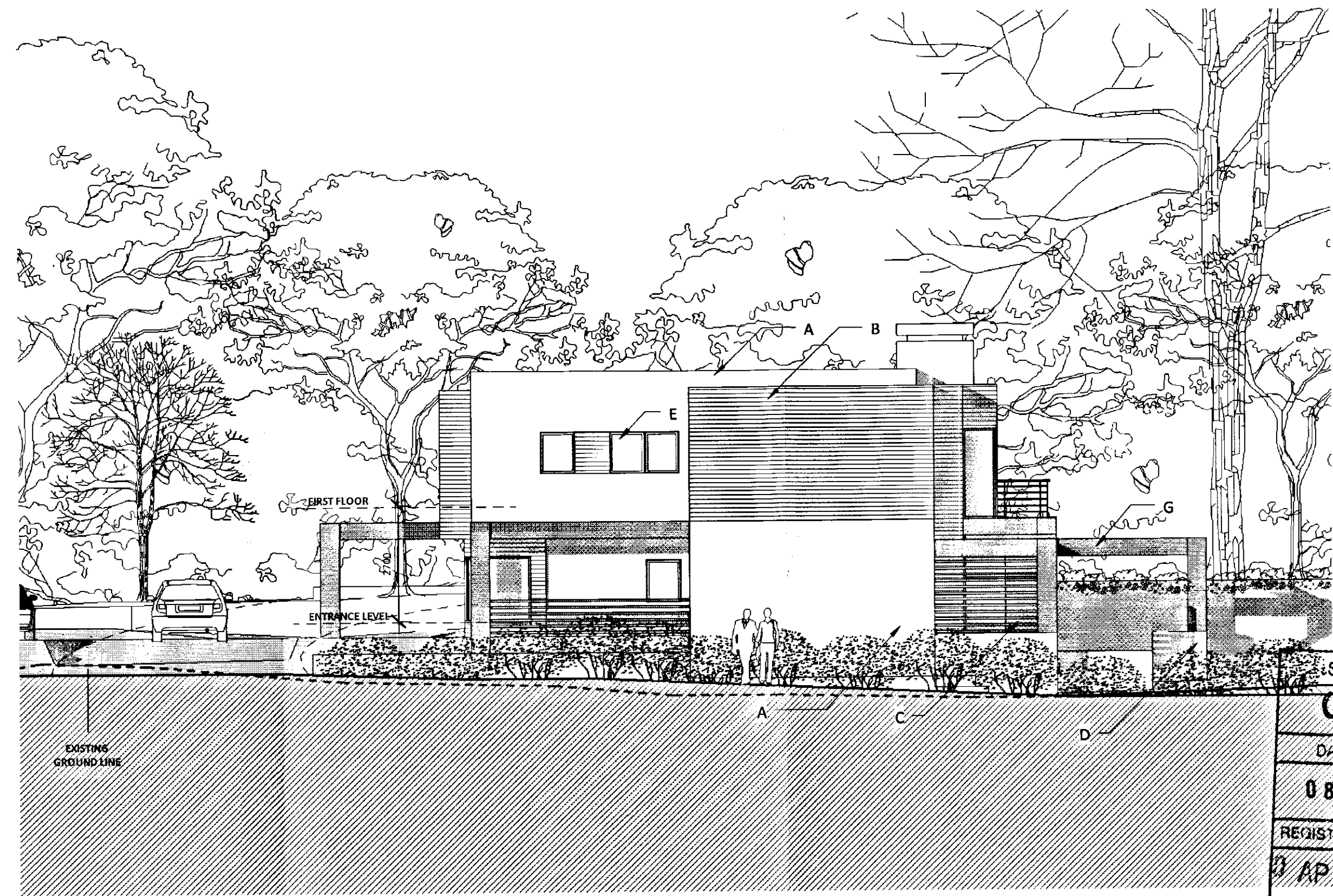
Drawing No:  
GRP - H5 105

Person:



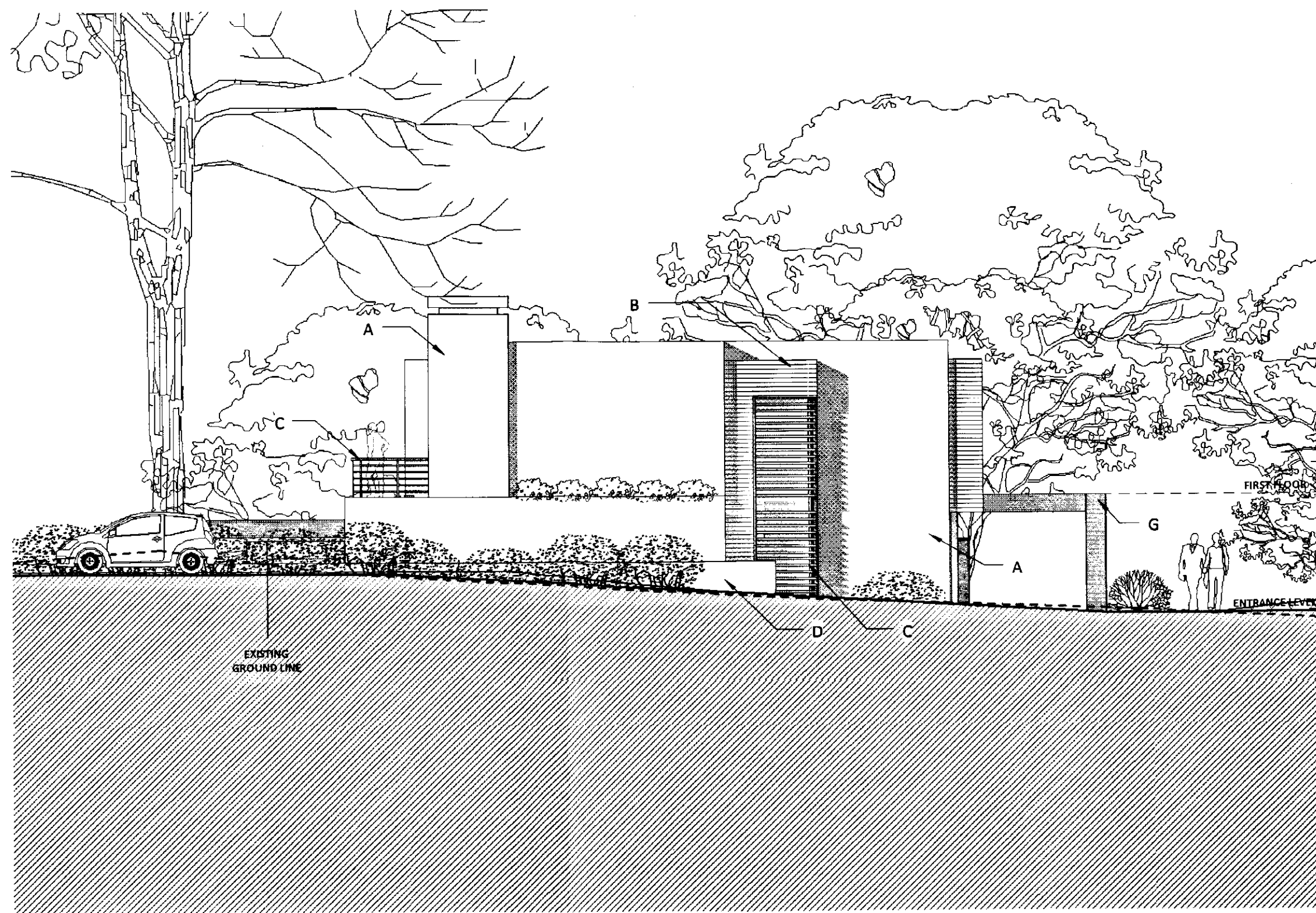


HOUSE 5 - SOUTH ELEVATION  
1:100

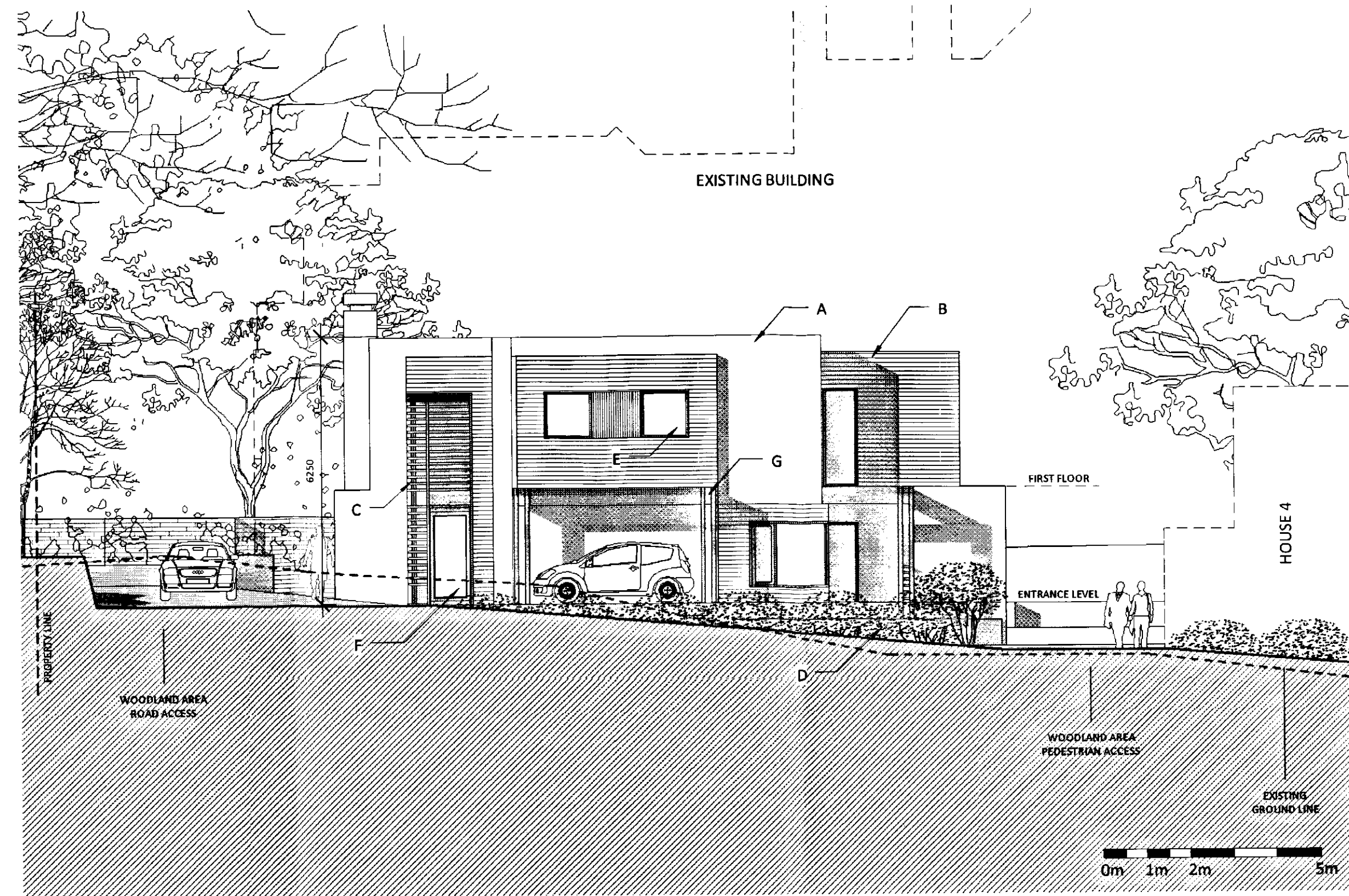


HOUSE 5 - WEST ELEVATION  
1:100

SOUTHWARK COUNCIL PLANNING	
<b>CASE FILE COPY</b>	
DATE RECEIVED	DECISION AND DATE
08 APR 2011	
REGISTERED NUMBER	
0 AP 575	



HOUSE 5 - EAST ELEVATION  
1:100



HOUSE 5 - NORTH ELEVATION  
1:100

General notes:

This drawing is copyright of KSR architects. This drawing must be read in conjunction with the design team's risk assessment, specification and all other relevant documentation and drawings. KSR architects accept no liability for any expense, loss or damage of whatsoever nature and however arising from any variation made to this drawing or in the execution of the work to which it relates which has not been referred to them and their approval obtained. Do not scale from this drawing or the digital data, only square dimensions are to be used. For Planning refer to linear scale. Check all dimensions on site.

Notes/Legends

**KEY LEGEND**

- A - HORIZONTAL FORMAT BRICKWORK
- B - TREATED TIMBER PANELLING
- C - TIMBER SCREENWORK
- D - BRICK PLANTER

- E - PAINTED ALUMINIUM FRAMED WINDOW
- F - HARDWOOD TIMBER DOOR
- G - TIMBER PERGOLA STRUCTURE

Stamp

Key Plan

**PLANNING APPLICATION**  
Dec 2010

KSR architects 14 Greenland Street London NW1 1UD		t: +44 (0)20 7692 5000 f: +44 (0)20 7692 5000 www.ksr-architects.com			
Project: <b>123 GROVE PARK</b> London		Title: <b>PROPOSED HOUSE 5 - ELEVATIONS</b>			
Date: Dec 2010 Drawn By: LRG Scale: 1:100 @A1 / 1:200 @A3	Checked: LRG	Project Ref: <b>GRP</b>	Drawing No: <b>GRP - H5 305</b>	Revision:	